

BYLAW  
10-2006

OF THE TOWN OF SLAVE LAKE

*Being a Bylaw of the Town of Slave Lake to Enable the Slave Lake Airport Services Commission to Set, Charge, and Collect Rotary Wing (Helicopter) Landing Fees in a Portion of the Town of Slave Lake*

**WHEREAS** Section 7 of the Municipal Government Act, RSA 2000 provides for the Town of Slave Lake to pass a bylaw for transport and transportation systems and for services provided by or on behalf of the municipality;

**AND WHEREAS** the Slave Lake Airport Services Commission is a regional services commission established under the Municipal Government Act to provide airport services according to the provisions of Alberta Regulation 267/98;

**AND WHEREAS** the Town of Slave Lake and the Municipal District of Lesser Slave River No. 124 are the members of the Slave Lake Airport Services Commission;

**AND WHEREAS** the Slave Lake Airport Services Commission seeks the authority of the Town of Slave Lake to set, charge, and collect the rotary wing (helicopter) landing fees on lands within the Town of Slave Lake within the 4000 metre (13,123 feet) radius of the defined reference point at the Slave Lake Airport which represents the radius of where airport zoning regulations apply;

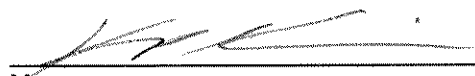
**AND WHEREAS** rotary wing (helicopter) aircraft may not necessarily land at the Slave Lake Airport but on lands with the 4000 metre (13,123 feet) radius of the reference point at the Slave Lake Airport;


**NOW THEREFORE**, the Council for the Town of Slave Lake HEREBY ENACTS AS FOLLOWS:

1. The Slave Lake Airport Services Commission is authorized to set, charge, and collect minimum landing fees per landing for rotary wing (helicopter) aircraft within the Town of Slave Lake in the area that is within 4000 metres (13,123 feet) of the defined reference point at the Slave Lake Airport.
2. The location of the defined reference point at the Slave Lake Airport and the 4000 metre (13,123 feet) radius is identified on Schedule "A" which is a part of this bylaw.
3. The minimum landing fees per landing for rotary wing (helicopter) aircraft are considered to be valid in the Town of Slave Lake if passed by a bylaw of the Slave Lake Airport Services Commission and the fees can be amended from time to time by the Slave Lake Airport Services Commission without amending this bylaw.

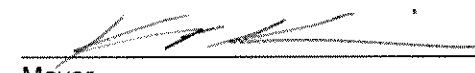
This bylaw becomes effective on March 7, 2006.

Read a first time this 7<sup>th</sup> day of MARCH, A.D., 2006

  
\_\_\_\_\_  
Mayor

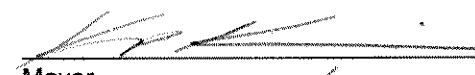
  
\_\_\_\_\_  
CAO

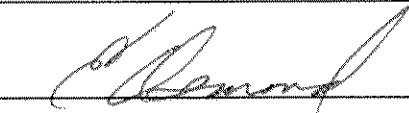
Read a second time this 7<sup>th</sup> day of MARCH, A.D., 2006

  
\_\_\_\_\_  
Mayor

  
\_\_\_\_\_  
CAO

Read a third time and finally passed, this 7<sup>th</sup> day of MARCH, A.D., 2006

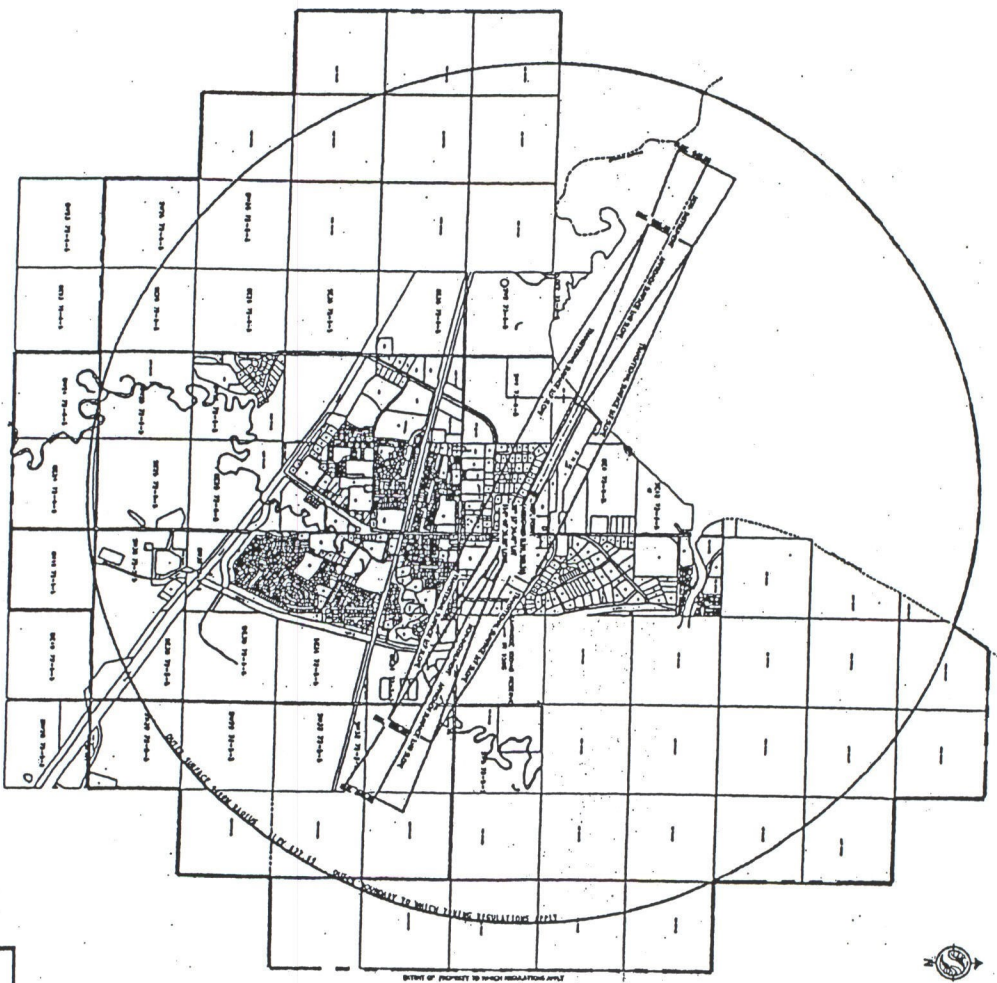
  
\_\_\_\_\_  
Mayor

  
\_\_\_\_\_  
CAO

Schedule "A"

# SLAVE LAKE AIRPORT ZONING REGULATIONS

Sheet 2 of 2  
January 21 2005  
Scale: 1:2000



Plan - S1001